

# THE GRINDLEFORD NEWS

April 2022



## 47 Years of Service



John Morton has just stood down as Chair of the Playing Fields management committee after 47 years. John and Philip Haywood have been the driving forces at the Playing Fields throughout all these years. Without their involvement and commitment there probably would not have been a village playing field or the Pavilion adjacent to Grindleford Bridge. John's involvement goes back to when the village used sports facilities adjacent to the church and on the old playing field opposite the garage. These facilities had limitations and it was John who persuaded

Robert Crossland, the then owner who farmed the field adjacent to Grindleford bridge, to sell that land to the village to create the playing field we have today.

John became Chair at the start of that purchase process and was involved in all of the raising for the funds for the purchase.

Since then John has himself enjoyed the use of the playing field by playing sport (seen in the picture in goal). Importantly he has been the main driving force in the establishment and development of the Pavilion on the field

The village has much to thank John for. The Trustees and committee have expressed to him personally their appreciation and gratitude for all of John's dedication and effort over these many years, but also wish to use these pages to thank him publically.



## Can You Contribute?

The committee is very keen to involve a wider range of people in the management of the facilities, hopefully involving a younger demographic and improving our gender balance. We welcome all offers of help which will further those aims. Considering one of the key roles, the secretary will also be stepping back in the next year or so and we are keen to involve someone to work alongside Steve with the aim of hopefully taking over that role when that time comes.

## Celebration Event

**Saturday June 18th** has been chosen as the date when we celebrate:

- the opening of renewed Pavilion facilities.
- hopefully substantial completion of the new Play Area scheme (see below).
- nearly 5 decades of John Morton's service to the Playing Fields and Grindleford.

We had hoped to hold an event before but this was delayed by Covid. We will publicise more details nearer the time. Discussions are also ongoing which may well result in the event being run in parallel with the return of the Grindleford Carnival.

## MUGA

Quite a lot of work had been undertaken by various working parties in order to revitalise the MUGA and make the area more useable for sport after the damage caused by the flood of 2019. Good progress was being made, however the recent flood set back that effort by dumping more silt on to the playing surface. Undaunted the working parties continue in order to recover the situation and get the facility ready for sport. The work is ongoing.

The village Tree Planting Group have planted saplings in the area just beyond the MUGA and work to allow more planting is ongoing.



## Covid Update

The Pavilion remains open for bookings. In line with Government advice precautions, such as the wearing of face masks, are now a matter of personal choice. User groups need to make their own risk assessments regarding the new Covid situation and their specific activities. Ventilation is one of the more effective countermeasures, so it is worth creating as much ventilation as possible.

# Flooding



Whilst never as urgent an issue as flooding in peoples home, flooding did cause serious damage on the playing field. The cricket shed was carried by flood water over the river and is now unusable. Recently erected fencing along the river bank has been pushed over, as have the gates adjacent to the bridge. Cricket equipment has been relocated whilst we assess the situation and remedial measures.

## Start of Work on Playground

Our Contractor is about to start work on our Playground to implement the revised scheme.



# 'CHANNEL SWIM' RAISES £4000 FOR UKRAINE

An amazing £4000 was raised for Ukraine by a group of local young people, including several Grindlefordians. They decided to team up and 'swim the Channel' at Hathersage open air pool who gave them an hour free in which to complete it. In fact, they completed the mammoth 32 kilometre swim in 52 minutes! The youngest swimmer was aged 6, the oldest 15 and between them they swam an average of just under 40 lengths each.



Fin Hayes who attends Grindleford Primary School said: 'I am so happy that the money raised is going to such a good cause.'



Grindleford News, on behalf of the village, congratulates all involved.

# St Helen's Church *News*

Hooray for Spring! Spring always puts a spring into my step. Isn't it wonderful to see the daylight hours getting longer and to feel the warmth of the sun's rays for the first time after the chilling winds and storms of winter?

The word 'spring' comes from the Old English verb *sprengan*, meaning to arise, leap up or burst forth like a spring of water. All nature wakes up, shakes itself and opens for business: daffodils splash yellow paint on every green vista, like an ecological graffiti artist, the trees stretch out new leaves to the light and make up for lost time, there are new-born lambs gambolling in the fields and pints are being quaffed in pub gardens.

Spring is good for our well-being. Spring has power to reinvigorate us and give us new strength and hope as human beings, even though the many and varied challenges and troubles of life will still be with us through all the seasons.

By the time you read this, I sincerely hope and pray that the war in Ukraine will be over, that a lasting peace will be established, rebuilding and renewal will be seen, and the many refugees will have found new homes and jobs, or been able to return to their homeland.

I hope and pray that the number of cases of Covid will be declining steadily, that new vaccines and treatments will further protect us all and especially people who are vulnerable.

I hope and pray that those households struggling with rising bills for fuel and food will receive generous help from both our government and local community organisations.

Spring in the northern hemisphere coincides with the churches' celebrations of Jesus rising from the tomb on Easter Day. This event was truly a bursting forth into new

life, and it took all his followers by surprise, even though Jesus had told them several times that he would be killed but would be raised from the dead. Gradually, as they met with Jesus, scarred but very much alive, they came to understand what it meant - that the dark winter of darkness and death was over forever. Jesus' resurrection on that first Easter Day is the reason why I have hope and keep on praying for peace and justice in the world. Since that day God's abundant life has been springing up in the hearts and lives of every person who believes and trusts in Jesus the Spring of Life. He will put his spring in your step too, if you ask him.

*Paul Moore is Priest-in-Charge of Grindleford, Bamford and Hathersage.*

*He used to like Cadbury's Creme Eggs, but now prefers a large slab of Fruit & Nut.*

---

## **GRINDLEFORD UKRAINE SUPPORT GROUP**

No doubt everyone has been shocked by events in Ukraine, with many of us wanting to do something.

Several people in the area, have registered interest in hosting refugees fleeing the war in Ukraine and a group has formed with the aim of sharing ideas and information. It is felt that a coordinated community response would be supportive for both refugees and hosts and would maybe lessen any feelings of isolation. Once again, Grindleford has shown itself to be a community that pulls together.

So far, we have met twice at the Maynard and have shared posts on a new Facebook group. Some are offering accommodation and others are wanting to support those hosting.

A few charities and other organisations have been approached.

If you are interested in joining in or thinking of applying to host refugees or just want to support those who do, please join the Facebook group "Grindleford Ukraine Support".

Hilary Malden

# A day in the life of a flood warden

As a supplementary to the Parish Council article found elsewhere in these pages, I spoke to one of our flood wardens immediately after the last flooding and it was a tale that feels like worth sharing. We all know they do a great job but I hadn't appreciated just exactly what the job entails.

With the flood levels further up the river looking worse and worse, my interlocutor spent the morning providing sandbags for those who needed them. There is however no store of sandbags waiting to go. He told me that if they are filled too early, after a few months they start to rot and spill, and worse, get wet so they are of less use in action. So the first job is to find the stores of sand and bags, and fill the bags. With good humour, my warden told me that a spade doesn't fit into a sandbag, so it's not just a case of shovelling, there is an art to putting the corner of the spade in the bag and persuading the sand to go in it rather than everywhere else; which takes quite a while, especially times several tens or a hundred bags.

Moving the bags into place then being the easy job, although pretty hard work as you can imagine.

Extra supplies of bags were ordered, but the Council wasn't able to deliver enough of them in time to all the places up and down the river in need. At some point during the afternoon a 4 x 4 arrived which had battled its way over from Bradwell; the Council had told them that we had sandbags. Alas no, so they had to battle their way back again empty-handed, which felt like such a shame but alas couldn't be remedied at village level.

Then the water came. The wardens were dashing round the village responding to calls for help, with one (personal) phone taking three days to dry out properly; at least one thing we can do next year is buy a dedicated waterproof phone. The perennial issue is that a warden can't move furniture and sandbags etc in the pouring rain, while taking offers of help and calls for those needing help at the same time. More on that below.

By this time the water was running across the road, fast. Other routes out of the valley were blocked, at the weir between Froggatt and Calver, and by the bridge at Hathersage. Through Grindleford was the only way out. The wardens, later supported by locals keen to help, manned the road just under the bridge so that cars went through very, very slowly and prevented a bow wave going over the wall at the Old Post Office. With one idiotic exception drivers adhered to instructions and behaved thoughtfully. Then more sandbags were needed round the back of a house



to shore up the French doors; the water was over wellington height at this point and moving down into the garden brought the level over knee or thigh, depending on height of warden. The following day whatever was in the water caused some nasty blotches, and proper waders are clearly also a purchase which needs to be made for next year.

By the time the danger was passed the wardens had been working flat out since the early morning. Its undoubtedly the case that they helped to avoid the damage being a lot worse. Needless to say the old wardens were unable to sit on their hands and came out to help, and our new wardens John and Bob worked immensely hard for the village. I know we are all really grateful.

It would be nice if there were no more flooding in Grindleford, but that's optimistic as we know. So in preparation for next year, the Council is working with the wardens to set up an information point, which can take calls for those wanting to help, and those needing help, to take some of the pressure off. Anyone who has experience of that sort of thing and ideas of how it might look, do get in touch.



More widely, as reported elsewhere, there is work going on to mitigate the impact of flooding as much as possible. We'll keep reporting on that after each Council meeting. In the meantime, huge thanks to the wardens past and current for all that they do.

# Hi there, we're a new village group, **FORD – the Friends of the River Derwent.**

The Derwent is at the heart of our village and our main aim is to bring together the various groups who have a stake in it to help keep the river a welcoming, happy and healthy place.

The river affects many of us. From those whose homes are threatened by flooding, to the swimmers, the fishing clubs, the children, the litter pickers and those interested in the ecology, others concerned about reports of pollution and many more.

We plan to bring people together from all these interest groups across the Derwent's catchment to tackle these and other issues. We're starting in Grindleford but would like to link up with groups and organisations further afield too, linking all sectors and communities who value our river.

We are new, so have many people to speak to and much to learn. But these are our aims:

- We are an open, networked group of people. There is no membership. Anyone who lives, works or plays on or near the Derwent is welcome to be part of this.
- We want to learn what the river and its communities need to be healthy: we will listen to expertise and value lived experience.
- Our river touches all our lives and it can be an emotive subject. We want to facilitate any difficult conversations and listen with respect, curiosity, and empathy to everyone.
- Fundamentally, we aim to get involved in tasks that help to look after the river.

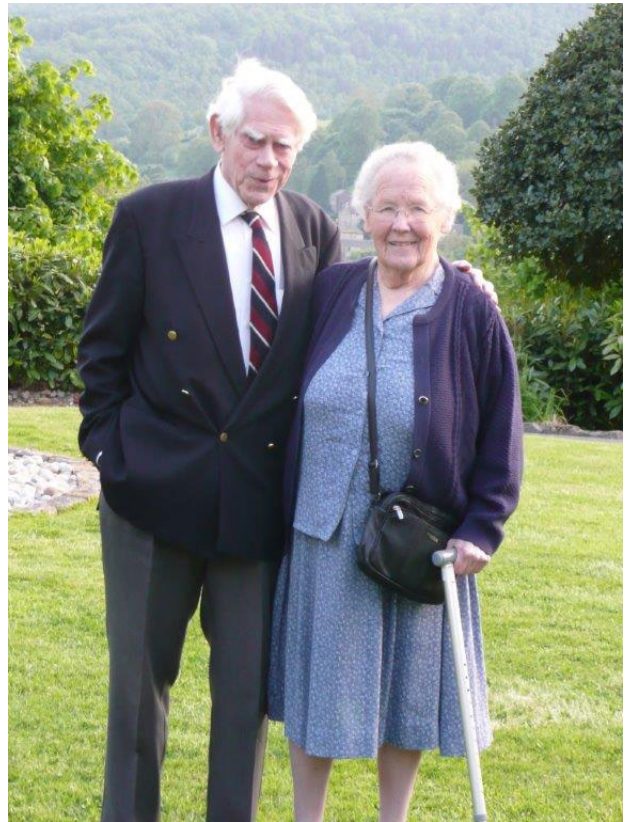
Our next meeting will be at the Sir William on 27 April at 7pm Please come along if you'd like to join us. We also have a WhatsApp group - contact Jane on 07786 574676 if you'd like to join in.

C Cooper

# In Memory of Bob Adams

Many villagers will remember Bob Adams who lived in Grindleford for 40 years, who passed away in Tetbury in January aged 99. Bob and his wife Sheila moved to the village in 1976 from Sheffield and lived in Holly Croft on Maynard Road for 10 years before moving to Padley Mews. Sheila passed away in 2015 and the next year Bob moved south to be closer to his family.

Bob and Sheila met at University College London whilst studying architecture just after World War 2. Shortly after marrying they moved to work in Jamaica for 3 years returning in 1951 with their new daughter Kate to live in Sheffield and be joined by 3 more sons.



Bob's career led him to be the senior partner at Sheffield architectural firm Hadfield Cawkwell Davidson. He found time to teach at the University of Sheffield in the Architecture Department, and there helped set up a new School of Urban Studies and Planning, and Centre for Environmental Studies. As a council member of the Royal Institute of British Architects, he also served as Vice President, Hon Treasurer and Hon Librarian where he started the RIBA Drawings Collection. He was a board member and then Chair of the Architects Registration Council which oversees education and regulation of Architects in the UK. To complete the set he was also on the Council of the Royal Town Planning Institute. In January 2016, aged 94, he received an honorary Doctorate from the University of Sheffield on the 50<sup>th</sup> Anniversary of the founding of the School of Urban and Town Planning. Sheffield city newspaper reports of these University awards at this time described him as "one of the UK's most distinguished architects". His architectural work lives on around Sheffield and even in the village.

Bob led a full and varied life outside of work. The following impressive list is not exhaustive, the Grindleford News is just not big enough! ..... Bob was a Justice of the

Peace on the Children's Bench for 25 years. He undertook a Churchill Scholarship in 1968 to study schools for the blind, travelling America and building up a wealth of knowledge to bring back and apply in the UK. He was also involved in buying and converting a double-decker Routemaster bus into a mobile fund-raising vehicle for Oxfam which successfully toured the North of England. Closer to home, he was a member of the Nether Padley Parish Council then the amalgamated Grindleford Parish Council for well over 30 years. On retiring at 63, Bob's strong sense for civic duty continued. He joined the Peak Park Planning Board commenting on applications on Listed buildings. He was a member of the Peak Park National Committee, and was Vice-Chair of the Finance Committee, and a Governor at Bretton Hall in Yorkshire where he oversaw the now well-known Yorkshire Sculpture Park..... All of this alongside a family life with his 4 children, 9 grandchildren and 8 great grandchildren.

By any measure the preceding text describes a full life, but he was never one to boast and only through knowing him for a long time would occasional comments or references to his wide experiences make one realise just how much he had been involved with. This included his wartime service, where he was a navigator in 178 Squadron, joining the RAF in 1940 aged 18. Training in Aden he began flying missions over the Mediterranean from bases in Africa and Italy. Overall, he completed 68 operational missions, finishing the war as an advanced navigator instructor, also earning the Distinguished Flying Cross for guiding his crew back by astral navigation, following the loss of all instrumentation after his aircraft had been attacked.

Significantly, his squadron was involved in missions into Poland during the Warsaw Uprising in August 1944. He was then aged just 22, and had to navigate to the drop zones at night at low altitude. He described these missions as terrifying as overall the losses were horrendous. One Polish squadron lost all their aircraft and another RAF squadron lost all but one aircraft. His squadron, 178 squadron, started with 22 planes and ended up with just 6. The US Air Force suffered even heavier losses and pulled out of the operation. Eventually the missions were abandoned, but the Polish people were forever grateful to the RAF and South African Air Force for persevering and staying by their side.

Bob later joined the Warsaw Group, a group of UK and South African aircrews who had flown into Poland. They were regularly invited to Warsaw by the Polish Government in recognition of their efforts, and he made 3 visits there with his final one being in 2014 for the 70<sup>th</sup> anniversary. Bob was awarded the Polish Cross of

Valour, The Warsaw Cross and the Polish Presidential Order of Merit and is recognised in the Uprising Museum in Warsaw. He was immensely proud of what he had done over Poland, although devastated by the losses, and said afterwards that they were sent on these missions and weren't expected to get back. "Many of the best crews were lost. You just got on with it and I was just lucky". In 2018 Peter Chudy, who he had met in Poland, arranged for an American Flag to be flown over the Congressional building in Washington in his honour in recognition of his outstanding achievements in the war. That flag was to be presented to him at the Uprising Museum in Warsaw in 2019, but because of COVID it was instead posted and arrived with him on VE day. That flag was on his coffin at his funeral service, alongside his many service medals. Every year, Bob received dozens of letters and cards of thanks from children who had visited the Uprising Museum and it greatly touched him.

Bob was an amazing gentleman, and was active in the village right up till he moved south. Well into his 90s, he was still attending rugby matches at Twickenham or events such as his grandson's University Challenge TV recording. His sharp mind and wit, and his great sense of humour stayed with him to the end. Bob's funeral service at Cheltenham crematorium was attended by many, and was a celebration of the life well lived by a wonderful man.

Condolences to his family and many friends.

---

# Monthly Acoustic Music Sessions

Acoustic Music Session at the Sir William on the last Thursday of the month. Next session 28th April. Singers and musicians of all abilities welcome or just come and listen.

# Grindleford Rainbows

## We need you

Girlguiding in the Hope Valley District has returned to Face to Face meetings.

We are fortunate to have units thriving in Bradwell, Hathersage and Eyam.

These villages offer Rainbows, Brownies and Guides.

But we still need more volunteers specially to support Grindleford Rainbows.

During the last year Grindleford Rainbows has been supported by 2 inspiring young women, Chloe and Jasmine. But during the last few months they have found they have not been able to commit due to University deadlines and placements.

Grindleford Rainbows has been part of the village for over 15 years and unless anyone can help the unit will close.

If you enjoy spending time making a mess, singing and baking and would like to help inspire the next generation by volunteering for an hour a week then please get in touch.

Michelle Bingley

Hope Valley & Tideswell District Commissioner

[HVTDC@girlguidingderbyshire.org](mailto:HVTDC@girlguidingderbyshire.org)



**Inspire girls in Grindleford today  
Volunteer at [girlguiding.org.uk](http://girlguiding.org.uk)**

*“Make sure they can run a three- legged race at 7, and run the country at 27.”*

*HELEN, Rainbows volunteer*

**Registered charity number 306016**

# Grindleford Parish Council

Sarah Battarbee, Parish Clerk,  
Overgrindle, Sir William Hill Road, Grindleford, Hope Valley, Derbyshire S32 2HS

☎ 07753 134633

✉ [grindleparish@gmail.com](mailto:grindleparish@gmail.com)

🖥 [grindlefordparishcouncil.co.uk](http://grindlefordparishcouncil.co.uk)

There has been a fair bit going on this quarter.

**Flooding.** The immediate issue affecting us the most is of course the recent flooding, which we had so hoped to avoid this year after a dry January. At the behest of our District Councillor, we were able to arrange a village meeting with the Parish Council, the Environment Agency, Derbyshire County Council and a number of village residents. (St Helens Church kindly provided a venue to fit everyone in, and the shop provided heaps of very nice cake – thank you).

The EA and DCC were sympathetic and willing to do what they could to help mitigate the possibility and impact of flooding, although it is quite clear that they have no funds and will not be able to provide any financial support. Nevertheless some positive actions came out of the meeting. The Parish Council signed up to taking over liaising with agencies from the Grindleford Flood Group, to whom they extended their very grateful thanks for the huge amount of work they have done. The two Flood Wardens, Bob Wilson and John Baily, are taking over from Nick Bater and John Wood and will continue to play a vital role in on-the-day emergency support. They can offer help moving items above the water line, placing sandbags and offering advice. At the moment Bob is taking calls on his phone, but this is far from ideal, so plans for a central coordination number to link those needing help and those volunteering to help are under consideration.

The Flood Wardens past and present play such an essential role and we are very grateful to them. Elsewhere in this News you will find a little piece on what it was like to be one of them during the last flood – quite a story.

There will be a standing item at each Parish Council meeting to discuss and progress plans. The full note of the meeting was sent round on the village e-newsletter recently, and if you didn't see it and would like to, please contact the clerk on [grindleparish@gmail.com](mailto:grindleparish@gmail.com). There is recognition that we cannot completely eliminate the threat of flood, but there is much which has already been done (tree clearance upstream, for example) which probably averted the early 2020 flood and reduced the impact of the water earlier this year. Further measures discussed at the meeting will be pursued as quickly as possible. Hopefully there will be no further flooding this summer, but winter will be upon us again soon enough.

**Telephone Box.** A rather more joyful tale. You will have seen the Box in all its new shiny red glory. The story so far: before lockdown the Parish Council made the decision to buy the box for £1. After a tussle with special instrumentation to crack it open, our favourite electrician managed to break in and do the necessary upgrade work to keep BT happy, and BT now pay the electricity bill which keeps the box aglow at all times. (With the right bulb, the energy consumption is minimal). That was a while ago now; it took a few more months to get the new wooden door surround replaced, as it was very badly rotted and beyond saving; the Parish Council ultimately taking the decision to buy a new one. Learning from the new noticeboard (more on that later) the door was delivered direct to John M's house, who kindly accommodated it until Matt and Sam and then Matt again wrangled it off and on and replaced the glass metal frame insert and sorted out the fittings and were generally admirable, because it was all very heavy and had rusted in over a great number of years. (Caesar might have been of some help with the transportation had he arrived a bit earlier). I think all still have ten fingers, so overall a success and many thanks to those good people. Nina acquired the required new toughened glass and Matt put it in. Matt is Mr Telephone Box is he not.

Then a bit of a hiatus while we puzzled over how to get it painted. We had seen some fairly horrifying quotes from other village phone boxes, and then – To The Rescue! - Ben Furniss, who lives in Grindleford and is one of the nation's hidden treasures. Here he is, doing a fab job as you can see from these photos. (At time of



writing he was just off to paint the little crown gold. Finishing touches). Ben's quote was so reasonable that the funding we have been able to raise from our County and District Councillors was enough to cover it, so that very difficult part of the project has now been completed. You can contact Ben on 07717750303 if you need him to come to your rescue too.



*Before, during and nearly after*

Now various good people, and some dogs apparently, are working out how to fit the shelves and put up the village map, again more on which can be found below. Janet, Rachel, Claire, Nina, Carrie, Marcus and Jane being some, with Blue and Nefi playing a vital part in project managing the proceedings.



I am mentioning everybody who has got involved with this project by name because it's been such a lovely process of collaboration, common sense and generosity that it feels like it's worth sharing, especially right now where in other parts of the continent those qualities seem to have been forgotten. Simon's lovely post on Facebook sums it up. "That the same sun rises on lucky me in my bucolic valley as it does on the

bombed citizens of Ukraine and on everything in between, is both obvious and somehow impossible. One must be grateful.”

**Ukraine Flag.** On the same subject, District Councillor Peter O’Brien reported that DDDC are flying the Ukraine flag from the Town Hall and villages might like to consider following suite. The Parish Council were strongly supportive of the proposal, but it was going to take a month to find a flag online. Hilary Malden made this beautiful flag in literally an afternoon and Ray hoisted it the next day.



I am so impressed as I think we all are, it’s only a gesture but writ large across the country and across the world it is saying something. Also spotted, all the ribbons on the Lent cross are blue and yellow. The recent kids’ swimathon was also quite something.

**Climate and Biodiversity Emergency Declaration Action Plan.** We now have one of these but it is rather techy and unreadable. While I am recuperating I will turn it into something a bit more approachable. Lots going on behind the scenes. In this edition of the News, you will find a an article on EV charging points, which is the first in a hopefully never-ending series on how we can tackle climate change and our biodiversity crisis. I hope you will find them useful.

**Speedwatch.** At a recent Speedwatch session 500 cars were recorded of which 36 were exceeding the 30 mph speed limit. That is quite an interesting and impressive set of data, and thanks to the group for carrying out the checks. The Speedwatch group would like to recruit more members, particularly midweek, so if you have a concern over cars speeding in the village, and can help, please contact the Clerk on [grindleparish@gmail.com](mailto:grindleparish@gmail.com).

**Jubilee arrangements.** We were full steam ahead on this until the news from Ukraine, when other more important considerations took over. But the Parish Council does have a plan. So, the aim is to have a bring-your-own Party in the Park

(street parties being a bit more tricky due to the local topography) on 5 June – the Sunday. We hope that date will mean more people who are away for half term will be home and able to join in. There will be a formal Opening of the Telephone Box, which will also be one of two lasting commemorations of the Jubilee in Grindleford; somewhat as other places might have a plaque or a bench or a tree. We like to do things differently in S32. From there, there will be a short family village walk, taking in all the sights (school, church, pubs, railway station, etc). You'll be able to do this in your own time, missing out bits to make the walk as long or as short as you like and taking in the local bars should you care to do so; your only mission will be to get to the party by 3 pm, with your picnic. The Parish Council and possibly County Council are chucking in a bit of money for a band and some frivolity, and we will ask Alan if he can do us an onsite bar. To add to the celebrations, the walk will also, we hope, take in some new signed footpaths in the village. John Morton and Alan Jacques have been scoping out our hidden pathways, some of which have lovely and almost forgotten names, and are making signs to make sure those names are perpetuated. For the Jubilee we will attempt to get some little information sheets under the signs to tell the story. A proper and important part of Grindleford's heritage.

And then the jewel in the Crown so to speak. Alan Jacques has devised a marvellous circular walk round the perimeter of the village, taking in the local landmarks and starting and finishing at the community shop, where walkers can recover with tea and homemade cake. It will be called the Platinum Jubilee Walk (with the shorter walk known as the Queen's Walk). There will be a big reveal at the opening of the phone box, because a map with both walks on it will be affixed to the side wall. Walkers can pick up a hard copy leaflet from the phone box, or download a QR code, to get the route. Bob and Diane volunteered to be walk guinea pigs, and have tested it and declared it terrific, with wonderful views from the tops.

We hope it will be a lovely day for everyone, young and old.

**Bins.** Not the best winter for bin collection, but everyone pushed through and we survived. There has been a recent enquiry into what happened with Serco. I do think the staff at DDDC did their very best in difficult circumstances, and their comms

officer Jim Fearn kept us well up to date, even with the gloomy news. Hopefully things will improve from here on.

**Wildflowers.** DDDC were really positive about this, and a very nice man came out last year to scope the sites. Cutting to the chase, they have scarified a site or two and the Parish Council has caused to have purchased a big tub of wildflower seeds. Our very own Andrew Battye, who as most of you know has very useful combined expertise in the environment and horticulture, has taken on the job of making it happen. So with luck things are going to look lovely in the spring and summer. Thanks, Andrew! Come June and again in the autumn we will be looking for rakers. So that the wildflowers will bloom again next year.

**The new noticeboard.** We have Bob to thank again here, with help from John Morton, and his Kango drill. The noticeboard was delivered to Chez the Parish Clerk, up an inconveniently steep hill, where it maundered for a while until Bob scooped it up and took it back to his shed. It was *extremely* heavy. Bob and John dakker-dakkered out the old board, concrete blocks and all, replaced it with the new one, and I think we can agree it looks pretty good. We're working on a sign to announce it as Grindleford Parish Council's.

In an hilarious coda, I tried to take down a notice Bob had put up and couldn't reach. I complained about this to the Chair of the Parish Council, who replied, "it's the same height as the old board Sarah, you are shrinking".

Oh.

I leave you with an irrelevant but charming picture:



As someone commented, the maths is correct but sadly there is no tick symbol on the keyboard.

Sarah Battarbee, Parish Clerk

# Peter's Page

## News from Your Derbyshire Dales District Councillor



Everyone will now have received their new Council Tax Bill. The DDDC part has gone up by 1.94%. Although this may seem only a small amount, I was not in favour of the rise because

- families are being hit hard by price rises from all directions
- the Council underspent this year by about £300,000 – over 2% worth of Council Tax
- with all the refuse collection problems, I think residents deserve a refund

On the subject of refuse collection, remember that the collection of food caddies is suspended, at least temporarily. This is because the company that did the processing has closed down. Until a solution is found, we can put the caddy bags in with the household waste - not the garden waste please, for some technical reasons. Not ideal I know.

You may have heard a lot of talk about 'Levelling Up'. The Council is applying for some of this funding, which is going to be targeted at Ashbourne town centre. Meanwhile in Matlock, it is spending £1.25 million on a new cinema and hot food facility, in the old market hall on Bakewell Road. Not something I am enthusiastic about, particularly as the costs have for some reason risen by 45% in the last 6 months. Hopefully in the future some funding might come to this part of the District!

Money is being offered by DDDC to Parish Councils to support celebrations of the Queens Platinum Jubilee. I know that our own Grindleford Parish Council has some great plans, so I'm sure this will be put to good use. And just my regular reminder

that I have funding available to support local community projects, around £150 to £200 is the usual amount.

Finally, you will have read elsewhere in GN about the fantastic effort by around 30 children and young people from Grindleford, Eyam and Froggatt that raised £4,000 for the British Red Cross for their humanitarian aid work in Ukraine and neighbouring countries. Plus a number of local families are hoping to be able offer accommodation to refugees from that war-torn country. Alongside this the monthly lunch club for our elderly residents is once again flourishing, thanks to the efforts of local volunteers. Not forgetting of course the weekly Youth Club in the Pavilion, again supported on a volunteer basis.

It really is a privilege to represent such a caring, tolerant and giving community.

**Councillor Peter O'Brien**

tel: 639683

e: [peter.obrien@derbyshiredales.gov.uk](mailto:peter.obrien@derbyshiredales.gov.uk)

---

## Newspaper Deliveries Help Needed

Like many folk in the village, I look forward to reading my daily newspaper in the morning and until recently have been able to enjoy reading international, national and local news and enjoy a delivery every day excluding Sunday. Now, of course, that pleasure is now longer available because our efficient and pleasant newsagent has had to retire due to illness. A sadness for him as he enjoys meeting people and providing a splendid service.

Now, of course, those of us who enjoyed reading the daily news are devastated to think they will have to put up with the inconvenience of travelling to the shop rather than paying a very small fee for the convenience of a delivery.

We look forward to a kindly volunteer who will solve this problem and earn a bob or two! If you would like to make a lot of people happy please phone Frank Galbraith on 01433 639981 and he will be pleased to explain further details.

## *Grindleford*

# Horticultural Society

Springs here and the society talks have started, the February talk by Dr D Dawson & Dr D Ross on "The return of Otters to the Peak District", over Zoom due to high levels of Covid, was well attended. In March we trialled a Saturday talk by Thelma Griffiths from the National Trust on "Sphagnum: A Harvest of healing" and coming up in April "Living sustainably - is it really possible?", a talk by James Ellson a local author and small holder.

The summer brings outings to local gardens and areas of interest

Planning for the summer, the Grindleford Horticultural Show date is Saturday 20th August, plants take a while to grow so time to start. If you fancy helping out on the day please get in touch with David Jackson [DJLJ23@yahoo.co.uk](mailto:DJLJ23@yahoo.co.uk).

Discounts from garden centres are always welcome and 3 local garden centres offer discounts to our members on production of your membership card. Want more details? visit our website. <https://grindlefordhorticulturalsociety.weebly.com/>

### **Talk dates**

Tuesday 19th April, 7.30 PM at Bishop Pavilion "Living sustainably - is it really possible"

Saturday August 20th - Grindleford Horticultural Show

Saturday 15th October 10.30 AM at Bishop Pavilion "Dahlias"

Tuesday 15th November 7.30 PM at Bishop Pavilion AGM and social evening

David Jackson [DJLJ23@yahoo.co.uk](mailto:DJLJ23@yahoo.co.uk), 01433 630805



## Travelling Light - Use the Bus

The HVCA *Use the Bus* campaign will run for 2 weeks around the Easter Bank Holiday weekend, 11<sup>th</sup>-24<sup>th</sup> April 2022. Over that period we want to encourage everyone to experience the joy that bus travel can provide. Using the bus rather than the car can be a liberating experience, providing the opportunity to enjoy the scenery, relax, read, chat to friends and have fun with your children on the bus.

Travel by bus might enable you to undertake a one-way walk, for instance taking the 65 to Eyam and strolling back, or (for the more ambitious) the 257 to Bamford with a walk back over Stanage and through Longshaw. On other days maybe try visiting Bakewell on the 257 bus, or getting the 65 to Sheffield or Meadowhall. Take the family for a picnic at Chatsworth on the 257 to Baslow.

This is a Hope Valley wide campaign, which we hope will see many people across the valley rediscovering the benefits of bus travel. Going by bus can provide a whole new view on familiar journeys. Get social with people you have not seen for a while.

The Use the Bus campaign is generously supported by Hulleys of Baslow, First South Yorkshire, Stagecoach East Midlands, Derbyshire CC, High Peak BC, Derbyshire Dales DC, Peak District National Park Authority, Sheffield CC and South Yorkshire Passenger Transport Executive.



## Use Your Local Bus from Grindleford

- to **Buxton, for leisure, shopping or a day out**

### From Mount Pleasant at

10.09, 12.09, 14.09, 16.19\*, 18.25\*\* (\*16.17 on Saturdays; \*\*18.18 on Saturdays)

**Return from Buxton** at 09.02, 11.02, 13.02 and 15.35 (schooldays; 16.06 Saturday and school holidays)

Service is the **65**

- to **Sheffield, for commuting, Heart of the City and Meadowhall**

### From Mount Pleasant via Fox House and Ecclesall Road at

07.45\*, 10.02, 12.02, 14.02 and 17.02 (\*07.52 on Saturdays)

**Return from Sheffield** (also from Meadowhall 25 mins earlier) at 09.35, 11.35, 13.35, 15.40 and 17.45 (not from Meadowhall)

Service is the **65**

### From Mount Pleasant via Hathersage, Ladybower and Broomhill at

07.55, 09.10, 10.10, 11.10, 12.10, 13.10, 14.10, 15.30, 16.55 and 17.55

Hourly return services from Sheffield between 08.00 and 17.45

Service is the **257**

- to **Bakewell, for shopping or a day out**

### From Mount Pleasant at

09.01\*, 09.51, 10.51, 11.51, 12.52, 13.51, 14.51, 15.51\*\*, 17.31, 18.31

**Return from Bakewell** at 07.25, 08.40 & every hour until 13.40, then 15.00, 16.25, 17.25

Services is the **257** (connections at Baslow for Chesterfield) (\* 08.46 school holidays and Saturdays; \*\* not schooldays). The 65 and 257 also run on Sundays

*see full timetables at [www.derbybus.info/times/timetables](http://www.derbybus.info/times/timetables) or tel 01709 515151*

Information correct as at 2 April 2022

Tom Ricketts, Grindleford Bus Champion



# The Grindleford Community Shop



For the last few months Claire Sephton has been assisting Peter in the running of the shop. However, while she will continue as a volunteer, she has decided to give up the role of a part-time assistant manager. This means that we are again looking for someone to support Peter on a part-time basis. The arrangements can be very flexible, so might suit someone with school age children or a retired person. If you are interested, please e-mail Peter at [peter@grindlefordshop.co.uk](mailto:peter@grindlefordshop.co.uk) or call in to speak to him at the shop. There is a rota in the shop which can indicate when he is likely to be in. In addition to this paid role, we would be happy to welcome new volunteers. It would be particularly good to have people to work alongside existing volunteers on busy days in the Summer.

Several new volunteers have already joined the shop and, because of this and the efforts of Peter and Claire, the shop continues to thrive. Sales and profits are up so far this year. There was a short-lived dip on the weekend of the three storms.

However, we do now have tables and chairs in the church where people can take shelter when the weather is bad. The good weather in March has seen increasing demand for refreshments and, yet again, we must thank our cakemakers for keeping up with the demand.

Peter has also been working on improving the signage at the shop with new Open/Closed indicators and details of opening hours on the door. There are also now signs on the gates, where the Derwent Way footpath crosses the main road, and an 'A' board is back opposite the shop.

Despite the ending of Covid restrictions most of our customers continue to show respect for volunteers by using the hand sanitiser and wearing masks. We aim to continue to maintain good hygiene standards.

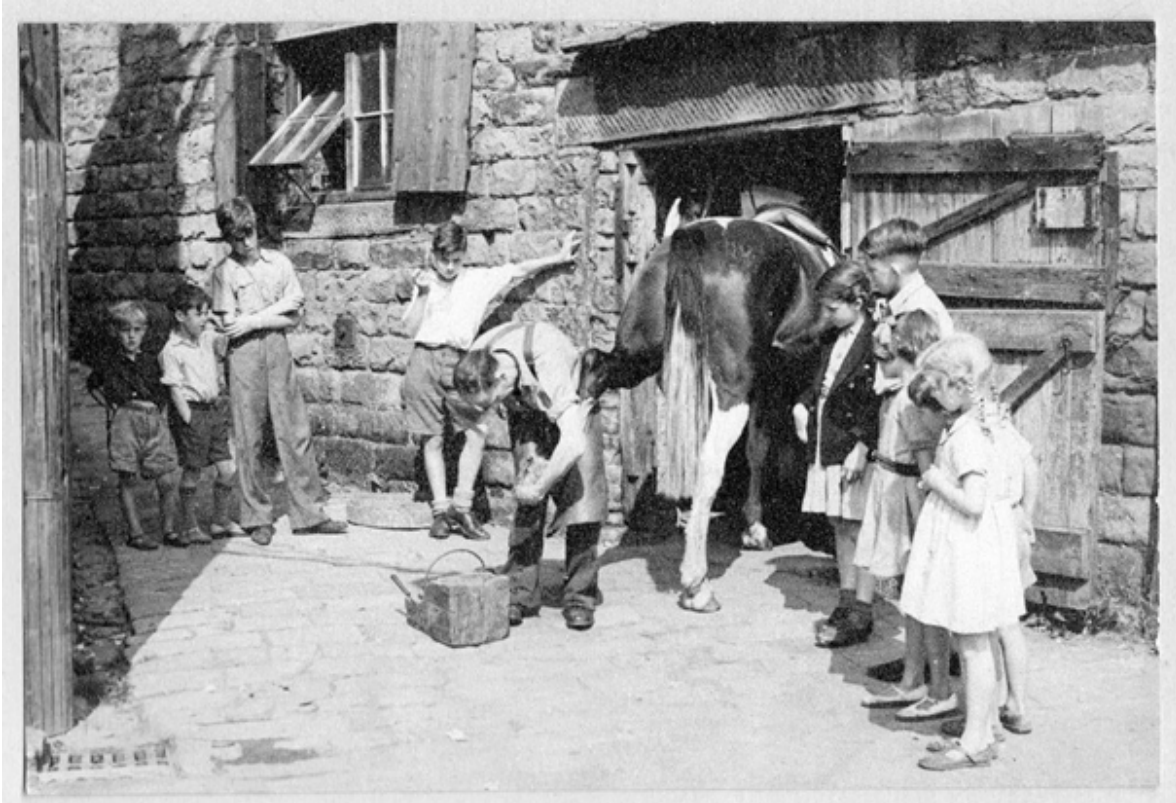
M Wren

---

**HUDSON, TS/9245 Driver Shoeing Smith Tom,**  
 238 Coy., RASC (HT) TS/9245 Farrier Corporal  
 Hudson, 854 Company, Army Service Corps.

Until relatively recent times, the Blacksmith's Forge was an integral part of village life. Indeed, older residents of Grindleford may remember Grindleford's resident Blacksmith, Tom Hudson. Tom was there for those who needed a horse shoeing, but he was also available for the more "meaty" tasks of forging new irons onto cartwheels, and "sharpening" a plough. These services were essential before the days of motor traffic, remaining afterwards too, until more general mechanisation and personal mobility. Nevertheless, his shoeing service remained popular throughout the 1940s and 1950s, when it would have been by no means unusual, when passing the Forge, to see ponies being fitted with new shoes, and perhaps others too, waiting to be shod, as somehow I don't think there would have been an appointment system!

The photograph below, dated around 1947, was kindly contributed by Geoff Pickerell, via Alan Jacques. Geoff is the nephew of the former head teacher of Grindleford School, Wilfred Grace. Wilf, assisted by his wife Madge, taught at the village school from 1942 until his retirement, in 1964. Geoff is the tall lad on the right hand side of the photo, but we don't know whether the chap on the "business" end of the horse is in fact Tom!



Tom was nevertheless, an integral part of village life, his day-to-day work being a source of fascination for all, as our photograph shows. Few, however, may now know of Tom's background, and his experience during World War I. He was born in Londesborough,<sup>1</sup> in the East Riding of Yorkshire, the son of George and Annie (Ryalls) Hudson, and baptised in Londesborough parish church on 23rd October 1881. The 1891 Census, when Tom was aged 9, reveals that his father was a Joiner and Carpenter. By 1901, we find Tom in the village of Marr (4 miles west of Doncaster), living in the household of Herbert Wood, a Blacksmith. He may have been Wood's apprentice, but as Tom was also described as a Blacksmith, he could also have qualified to work on his own by then.

Meanwhile, George and Annie had moved to Hooton Pagnell (6.5 miles NW of Doncaster), where George was a Farmer. A nephew, William Robson, aged 23, who had been living with them since 1881 or earlier, was now aged 23, and he too had become a Blacksmith.

By 1911 however, George and Anne, and Tom had arrived in Grindleford. They were living at #4 of the block of 4 Houses on the corner of the Main Road and Derwent Close. This, I assume was the property at the north east corner of the junction. They also had their grandson, George Herbert Armitage aged 18 months living with them. Tom's sister Annie had married Walter Armitage, at St Barthomew's Church in Sheffield, in 1908; however Tom was still single.

Tom's service in the Army began on 29th October 1915, when he enlisted at Bakewell. By then, he was aged 34, and had provided the Board with the information that his civilian occupation had been "Shoeing Smith". He was 5 feet 8 inches tall, and weighed 154 lbs.

He was based in the UK until 16th January 1916, leaving on an Expeditionary Force the next day on the ship "*Indian*", sailing from Devonport (Plymouth) to Salonica [*sic*] in Greece This was not like sailing across the Channel to France, as it took until 2nd February to get there!

The "Salonika Campaign" was fought between 1915 and 1918 along the "Macedonian Front", - Greece's borders with Albania, Serbia and Bulgaria - in an attempt to protect Serbia from the combined Bulgarian, German and Austro-Hungarian forces. Although Serbia fell, a massive allied advance was eventually successful in its liberation in September 1918.

However, the weaponry of opposing factions was not the only foe both sides had to deal with during this conflict. It has been said that the three "M"s - Mules, Mountains, and Mosquitoes - dominated this campaign. The terrain was a mixture of lakes, hills, ravines, and Mountains, the climate being extremes of cold and heat, and the lakes were a breeding ground for mosquitoes, which led to outbreaks of Malaria. The latter was responsible for 160,000 deaths of British Forces.<sup>2</sup>

The Mules, however, were the unsung heroes of the campaign. They were there to help move equipment, to carry water supplies, and to evacuate wounded to Field Hospitals behind the lines.<sup>3</sup>

This somewhat long-winded discourse paints the background for what was to happen to our “hero”. The records of his service career have been damaged, but it is possible to piece together what remains to make sense of what happened. A series of dots in the transcriptions below indicates missing portions.

On his arrival in Salonika on 2nd February 1916, he was assigned to 485 Company, 27th Division, then after some 9 months, on 9th November the same year he was transferred to 854 Company. The usual reason, I believe for transfer to different units involved decisions from above as to where forces were needed.

We next find mention of him in an article in the *Derbyshire Courier* of 13th May 1916, reporting on the proceedings at a recent Rural District Tribunal at Bakewell. The clerk to the Tribunal, Mr. A. Hawes, pointed out that “the military authorities were now challenging all men under 25, even though they might previously have been in starred occupations.<sup>4</sup> Thomas Hudson, of Grindleford Bridge, had been called to appear, but the Rev. F.L. Shaw (the Rector of Eyam) informed the Tribunal that he knew for a fact “that this man has been serving in Gallipoli, and is now at Salonika ... [and ] his mother came to see me, and what she should do in the matter”. The military representative, W.C. Tinsley, agreed it had been a mistake.

If a record of the proceedings of the Tribunal existed in Tom’s Army Service history, as indeed one might expect, it appears not to have survived, as the next available record is a Casualty Form, which summarises the incident which led to Tom being invalided out of the Army.

On 17th October 1917 he suffered a serious injury to his right hand, and when on 21st October he was admitted to 49 Gen. Hospital, it was deemed that it would “in all probability... interfere with his future efficiency as a soldier”.

A Court of Enquiry was convened on 5th November 1917 “in the field”, to investigate “the circumstances under which No. TS/9245 Farr. Corpl. Hudson, T, 854 Coy. ASC, was injured”. The Court took evidence from Farrier Wm. Day that:

“About 1645 on Oct 17th I was at the Farrier’s shop of 854 Coy. A mule was brought down to the ... treated for colic.... Go up to the mule to... lashed out kicking... thigh”.

In Hudson’s own words (apparently dictated, and signed by him, with a very shaky signature):

“...approaching a mule for the ... ing its chain, as it had... animal suddenly kicked at ... right thigh and right hand and was broken slightly. Two ... the hand swelled up & became pain[ful] On 19th Oct incisions were made ... hand. The thigh gave no further...”

So it appears he was kicked by a poorly Mule, breaking his right hand, and (less severely) damaging his right thigh. The conclusion of the enquiry, which led to Hudson being discharged from his duties, was recorded on 10th November 1917 by (looks like) S W Nicol / OC 27 DW ASC, and counter-signed by the Divisional Commander.

“I am of a persuasion that TS/9245 Farrier Cpl. Hudson 854 Coy. A.S.C. received the injury whilst in the performance of military duty and that he was in no way to blame”.

It would appear that Tom remained in Salonika until 24th April 1918, and on 21st September that year, was returned to 238 Company. However, his demobilization did not take place until 13th March 1919, when he embarked on the Ship “*El Kabira*” for the UK. On his discharge, he was provided with a “Protection Certificate and Certificate of Identity”, for a “Soldier not remaining with the Colours”, assigned to a Medical Category of B II.

And the rest, as they say, is “history”! We might assume that on his return to Grindleford, he was sufficiently recovered from his injuries that in due course he was able resume his lifetime’s work, taking his place as a truly valuable member of the Community.

This community service came into play during the Second World War, and we can only imagine what Tom, and others of the village may have felt when the young men of the village were called on to serve once again, on when war broke out for the second time, in 1939. Local Councils were directed by the Government to remove all road signs and any notice boards or nameplates, in order to confuse the enemy, should there be an invasion, or infiltration. Church and Chapel Notice Boards, and the signs for the Quarry, the College, and Grindleford Laundry, were all removed; but then someone remembered the names on the War Memorial. This caused some consternation, since the letters were metal, but Tom came to the rescue, by forging an iron band to put round it - a final irony, perhaps, in covering up the names of comrades who would have fought alongside him.<sup>5</sup>

He appears to have remained single for the remainder of his life, dying on 15th September 1962. His estate was administered by his nephew, Charles Armitage.

R Lockie

## References

<sup>1</sup> I am not sure how **Londesborough** should be pronounced - “[lonz] + [bur] + [uh]”, or “[lonz]]bruh]”?

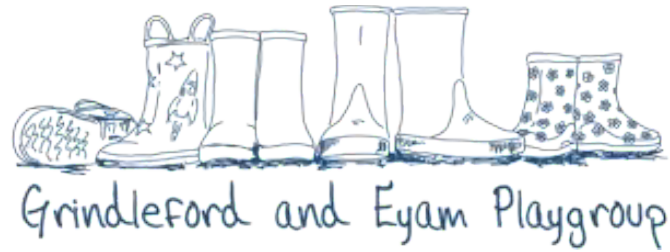
<sup>2</sup> The **National Army Museum** website has one of the best sources for information about the Salonika Campaign: <https://www.nam.ac.uk/explore/salonika-campaign>, but there are others, providing a fascinating window on a part of World War I history.

<sup>3</sup> Another source of information on the **Salonika Campaign** - its “defining features and hardships” - <https://www.theculturalexperience.com/defining-features-and-hardships-of-the-salonika-campaign.php>

<sup>4</sup> By “starred”, I assume what is meant is “protected” - occupations deemed to be essential to the War Effort on the Home Front.

<sup>5</sup> This anecdote is included in one of the excellent series of “**Father’s Tales**” - in this case, featuring “The Council” - stories related by Tom Jacques, and retold by his son Alan. For more information see the website <https://fatherstales.co.uk/>. Do visit, if you can - they’re great fun!





Hi everyone,

We'd like to start by saying a HUGE thank you to the extremely kind gentlemen who helped us rescue all of our resources and books from the underneath storage on a very rainy Sunday morning last month. As the river threatened it needed many hands to help carry everything upstairs and we are very grateful for the help. We hope anyone else who was affected is doing okay and we don't have to face it again for some time.



But as they say... the show must go on! We're really excited that our Mud Kitchen mornings have been able to restart. If you have children aged 1-4 and would like to visit our setting, meet other local families and get muddy(!) then join us on Friday mornings 10-11.30. Tea and toast available for everyone, just £2.50 per child.

We have been loving the recent burst of sunshine, we've been out and about making the most of the lovely weather and looking for signs of Spring.



This term we have celebrated World Book day.

The children enjoy stories at any time during the session. Snuggled up on the cushions in the book corner they listen to much-loved classics such as Room on the Broom, Hungry Caterpillar and the Gruffalo.



We also set out the tuff tray for the children to re-tell the story of the Three Little Pigs – everyone’s favourite.

Our story at the end of the session is a very special time. The children are invited to join us in storyland with a song and treated to a snack and drink as the staff member tells the story. These traditional fairy tales and nature stories often have a simple moral encouraging kindness, generosity, fairness and respect for others.

We continue to collect items for Bag2School. If you are planning a Spring clean please think of us! Good quality clothing, paired shoes, handbags, soft toys, curtains and towels can all be donated - drop your bags at the pavilion or get in touch to arrange collection.

We are also collecting printer cartridges so if you have any around or know of a local business who may have some please contact us.

Don’t forget to follow us on Facebook and Instagram

<https://www.facebook.com/Grindleford-and-Eyam-Playgroup-384845434973898/>

[https://instagram.com/grindlefordandeyam?utm\\_medium=copy\\_link](https://instagram.com/grindlefordandeyam?utm_medium=copy_link) Visit our

website for more information <https://grindlefordandeyamplaygroup.org.uk/>

Email [gepsupervisor@hotmail.com](mailto:gepsupervisor@hotmail.com)

## *Grindleford*

# Allotments

Winter has been a quiet time for the Grindleford Allotment. But as the sap rises and bulbs and blossom burst into life, minds turn to the busy growing season ahead!

Unfortunately, Covid put a shovel in the works the last few years and many of our planned projects had to be put on hold. Nevertheless, the sowing of wild flower seeds in the ever diminishing orchard (deers do love a fruit tree) went ahead and we hope in the coming years it will evolve into a beautiful meadow area that will be appreciated by humans and wildlife alike!

Looking ahead, we envisage that the allotment will be a hive of community activity once more this summer. Allotmenters will of course be busy digging, sowing and growing. In addition to this, however, we have a number of allotment-wide projects on the horizon. The old bee hive area is to be turned into a beautiful pollinator friendly flower garden with the unloved compost bays (soil and wood) providing the framework. The current site of the old bays is earmarked to become a new seating area and there are plans afoot for improving the allotment pond and creating a haven for all sorts of mini water and bog beasties.

We normally hold our AGM in winter accompanied by delicious mulled wine and mince pies. This year, however, we will be holding our general meeting outdoors in the summer. We look forward to welcoming a number of our new members to the event and we hope they enjoy the growing, harvesting (and let's face it) chatting to like-minded people as much as the seasoned plot holders do.

With the ever increasing deer herd on the other side of the river, we hope allotment holders and other visitors will remain vigilant and ensure the gates are closed when they leave.

So here's to a fantastic growing season and - in the words of the ever-informative GQT - 'May the weather be with you!'

C Norman

*A society grows great when old people plant trees whose shade they know they will never sit in....*

## Tree planting in the village.

Grindleford Tree Planting Group has, for a couple of years now, been trying to create some more wildlife corridors in the village by planting mixed native trees as hedging.

This is what we have achieved so far and what we hope to do this year. We have really enjoyed being able to work together with people of all ages from our Grindleford community. As no digging is required, it is easy for anyone to be involved.

### Project 1

A new native hedge was planted on 4th and 5th May 2021, 270 trees (blackthorn, hawthorn, dog rose, hazel, dogwood, silver birch, rowan and crab apple) in Grindleford village at the top of the "bonfire field". These are growing well.

### Project 2

Work on the 21st November 2021 was relocating some 10-year-old alder trees that were going to be cut down, to a new site so they could grow to maturity. The birds seem to love them.

### Project 3

Was planted over two weekends, 21st, 22nd, 27th and 28th November 2021. We planted a new native hedge (hawthorn, dogwood, dog rose, downy willow, goat willow, hazel, field maple and bird cherry) of 500 trees in Grindleford village behind the cricket field. Despite the evidence of deer wandering through the area, these have survived well and much new growth can be seen.

### Project 4

Was planted on 22th December 2021. We planted 20 five-year-old trees (oak, hazel and holly) in Oxhay Meadow in a collaborative project with The National Trust. These were planted sparsely so that they have the opportunity to grow to full maturity. Deer-proof cages were made and erected around each tree. Another 5 hawthorn were planted in the same field with minimal spiral guard protection.

Project 5 planned for Sunday 3rd April 2022 10-2

The church has kindly agreed for us to site a small, six tree, apple orchard behind the church. We plan to replant some mixed native species to "fill in" the gaps in the hedge that runs along the lane at the side of the church.

We have already created a "dead hedge" to shore up the hedge and also act as a temporary barrier and habitat whilst the newly laid hedge grows.

This is to try and keep the deer out of the churchyard in anticipation of creating a small apple orchard this autumn.

Project 6 planned for: 7th, 8th, 11th, 12th April 2022: 10-2 and after school 4-6; Saturday 9th and Sunday 10th April 2022 just 10-2

The Playing Fields association in the village has given permission to plant in the area behind the MUGA in order to augment the wetland area that exists. We have suggested planting some more native hedging and some wetland loving trees.

We have been successful in acquiring nearly 800 trees from The Conservation Volunteers to be planted. These are all native species: Aspen, Alder, Rowan, Hornbeam, Beech, Birch, Oak, Hazel, Goat Willow, Hawthorn, Dog Rose and Spindleberry.

We are aware that this is a wet area with some wet corridors emptying into the river. We are confident that our plans will encourage more flora, insects, amphibians, birds and hopefully mammals into the village.

We will include some seating areas for villagers to enjoy the wildlife and the peace.

Hopefully it will become an area for villagers of all ages to visit and learn about, and nurture nature.

**Please email Paul Thorpe if you would like to come along on one of the planting days** and a rough time that you would like to come so that we can ensure our key volunteers are there.

As usual, we will send out a risk assessment if you wish to come along to plant.

[Paul.thorpe@hotmail.com](mailto:Paul.thorpe@hotmail.com)

Instagram @ grindlefordtreeplantinggroup

# *Grindleford* Gaiters

The Gaiters walking group has continued its varied walking programme. The photo below shows the Gaiters at the Hunting Tower on a walk around the Chatsworth estate just after the floods.

The Gaiters walk fortnightly on Thursdays, generally meeting outside the church at 9:30. Our Walk leaders usually select a walk suitable for the conditions at the time.

	<b>Gaiters Walk Days 2022, Thursdays:</b>
	7th April
	21st April
	5th May
	19th May
	2nd June
	16th June
	30th June

Our 3 month walking schedule is shown here. Our next walk in April will be on the 7th.

We welcome new Grindleford walkers to our group. Most walks are typically about 5 miles; so to join us you will need to be fit enough to walk this distance over Peak District terrain, such as moorland and rocky paths. You should also be suitably equipped and bring a hot drink or water.

At the end of our walks we usually enjoy a good lunch together.

Keep walking.

Tim Reynolds 630023.

# CLIMATE AND BIODIVERSITY EMERGENCY ACTION PLAN

## ELECTRIC VEHICLE CHARGING POINTS – WHAT WE KNOW

There are very few EV charging points in the Hope Valley. Bearing in mind Grindleford has just recently declared a climate emergency, the lack of EV charging points is an issue. This information sheet summarises what we know, and what might happen in the future. Perhaps you would like to keep it.

There are three main types of EV charging – **rapid**, **fast**, and **slow**. These represent the power outputs, and therefore charging speeds, available to charge an EV. Note that power is measured in kilowatts (kW).

**Single phase.** Because most residential properties in the UK operate on a single-phase supply and are unable to support a three-phase 22kW charger, most EV drivers will not achieve charging speeds faster than 7kW at home, ie roughly 30 miles of range per hour. Most drivers recharge overnight, however, to take advantage of lower electricity rates, so a 32 amp single phase charging station is a good choice.

If you want a single-phase (up to 32 amps) electric car charger within your property, it's necessary to follow procedures and apply to Western Power by filling in an online form:

<https://www.westernpower.co.uk/install-an-ev-charging-point>

**3 phase.** It is possible to supply 3-phase to a domestic house without it being ruinously expensive, but it depends who else is drawing power from the main cable. Grindleford is lucky in that we are quite well supplied with 4 or 5 substations (supplying 500 KVA each). Although these have a fixed capacity, there is sufficient tolerance in most of these to supply domestic households as we have no demands from light industry. There are other variables for supply aside from the size of the substations: the size of the cables in the ground and the size of the high voltage cables which supply the substations.

If Western Power's network will not sustain a domestic single-phase demand, they will improve the supply at their expense. This is not so for 3-phase fast charge demands (ie charge times of one to two hours). If the cable supplying the house is not big enough or if the nearest transformer doesn't have the capacity, and an upgrade is needed, Western Power will look to the householder to help fund it. Speak to **Western Power 0800 096 3080** to find out if you can get

3-phase and what the actual cost would be, but installing this to your house could be upwards of £1000.

## RESIDENTS WITH ON-STREET PARKING

**Cables across the street.** A recent development is recharging boxes which can be fixed to the outside of your garden wall. These cost around usually in excess of £500, (a recent grant unfortunately ended on 31 March for properties other than flats and rented). Some councils have restrictions, ie you have to remove the cable as soon as your car is charged, and you will be liable if anyone trips. We are investigating Derbyshire's policy on this.



**Q. So, is it possible to recharge an EV from a house with on street parking now?** You can get a single-phase charger (or 3 phase, potentially at considerable cost) on your garden wall which saves cables down the path. You will still have to run a cable across the pavement. It also means you have to park outside your house. You need to address hazard trips sensibly (and public liability).

### Q. Can I use an ordinary plug?

You need to have an electrician to hard wire this into your own domestic electricity system. An ordinary 32 amp supply will be sufficient for single phase recharging.

### Q. What's being done to encourage electric cars for residents with on street parking?

In London and elsewhere, lampposts are being converted to use as charging points. This is clearly a great innovation as it eliminates cables across the pavement, and you can recharge at any lamppost, not just the one outside your house. There also seems to be new technology to put posts along the edge of the pavement, a bit like parking meters, from which you can recharge. These would have to be owned by the Highways Authority or there would be personal liability.



Derbyshire County Council are looking into improving the charging point network, <https://www.derbyshire.gov.uk/transport-roads/transport-plans/sustainable-travel/electric-vehicles/electric-vehicles-and-charging-points.aspx> The PDNPA are also investigating increasing the number of EV charging points in the Peak Park.



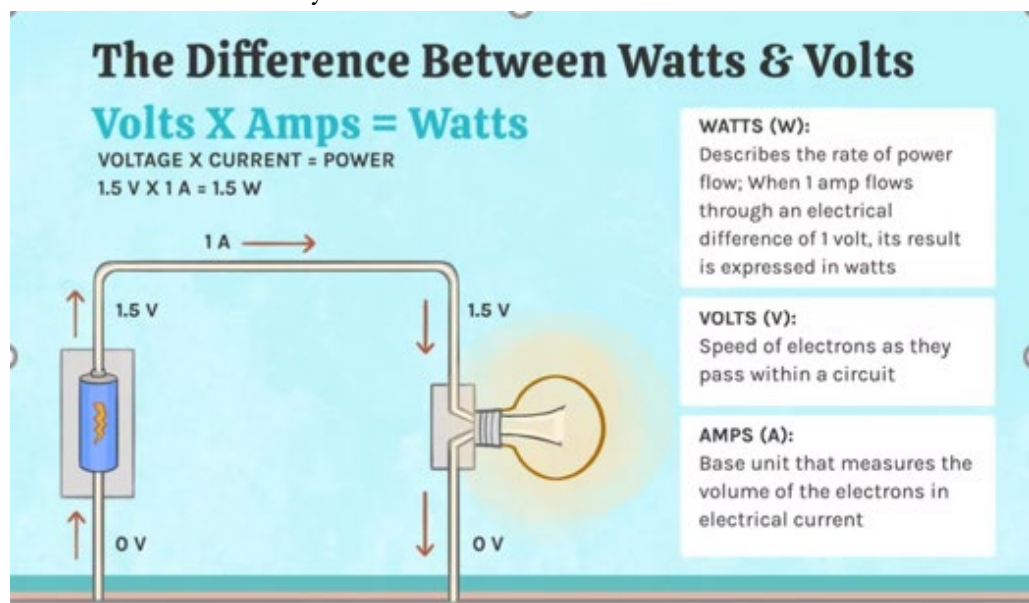
### Q. Can I use solar panels to recharge my car?

While the number of solar panels needed to charge an EV depends on the size of the car's battery, about 10 panels should generate enough electricity to charge a car with an average sized battery. It is worth considering investing in a solar panel battery. The benefit is that any excess energy from your solar panels can be stored and used to power your home or electric car when the panels aren't producing charge overnight. There's no stand-alone solar-powered charging system available – it must be integrated with the rest of your domestic power supply system.

**V2G.** In the next few years, it's very likely that electric cars won't just draw electricity from the grid when charging, but they'll also sell it back during hours of peak demand. This is known as 'vehicle-to-grid' (V2G) technology. Selling electricity back to the grid would help lessen the strain during peak hours, as well as helping drivers to save money.

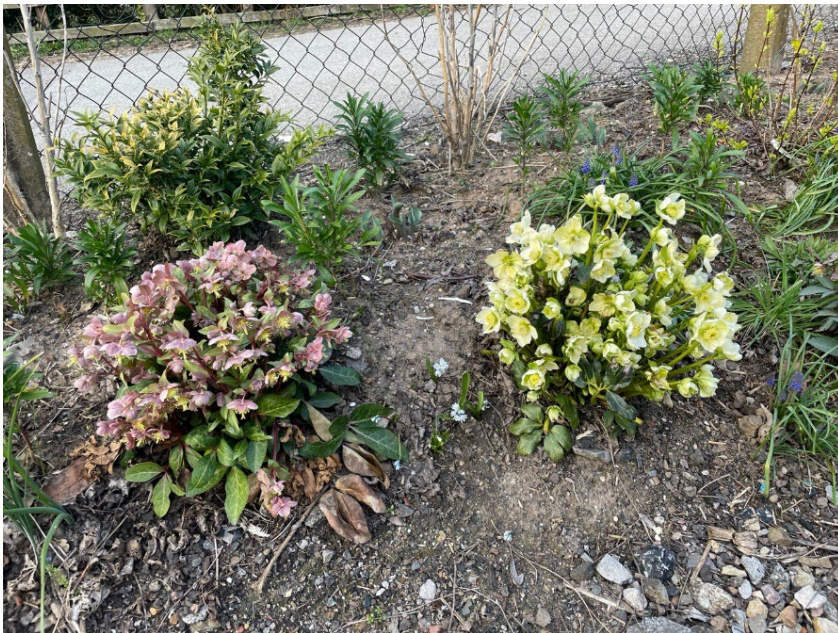
**Communal rechargers.** The Parish Council would be very pleased to find some communal sites for rechargers. Grindleford presents some specific problems however. It is problematic to find communal parking areas, although it seems that we are lucky with an adequate electricity supply for the village.

The Pavilion is privately owned land and is the responsibility of Grindleford Playing Fields Association, so any decisions there will have to be made by them. The church is investigating the possibility of 3 phase fast charging by the upper gate as part of the shop/church project. It might be worth looking into on-street charging bollards along the pavement but there are many obstacles. The school is interested in EV charging points and is liaising with the Sir William.





The spring flowers are in bloom down at the station and, for the first time in 2 years, there are actually passengers to see them!



Our new bed on Platform 2 is developing nicely and we plan to add further plants to our vintage red Midland Railway planting scheme. The beginning of April should see us working with volunteers from VolkerRailStory, the partner of Network Rail who are constructing the passing loop on the Hope Valley Line.

We will be working with them in spreading top soil, clearing and removing old growth along with the additional planting.

In addition, along with the Grindleford Tree Planting Group, we will be helping with tree planting, on Station Approach, to replace trees lost to Ash Dieback.

And that's not all! Each spring, Keep Britain Tidy runs a national campaign to encourage volunteers to pick up and safely dispose of as much litter as possible so as part of the campaign FOGS has pledged to litter pick around the station area during the last week of March and the first week of April. Every act to protect the environment makes a difference!



Finally, the station has been decorated with bunting in the Ukrainian National colours to show our solidarity with that country. Ukrainian Railways has been playing an important role in the war as the fast evacuation of civilians and wounded soldiers, and the movement of humanitarian aid and military, are top priorities as Ukraine fends off Russian advances.

C Gray

---

## Hope valley rail users group AGM

Unfortunately our prestigious speaker Sir Peter Hendy was self isolating due to Covid. However Chris Morgan, chair, put together an excellent summary of our line, its successes and recent challenges. Three senior staff from Northern also filled the breach. Tony Baxter, Regional director, gave a positive report on the new trains & trying to overcome challenges from the pandemic. The main themes are that there are far fewer people commuting and those few are not travelling 5 days a week.

There's also a big shift to on line, digital and .advance purchase tickets. The leisure traffic has significantly increased. Local passengers can testify to the difficulties of boarding trains on weekend mornings. We have also noted that many passengers on northern trains are inner-city as they can purchase cheaper tickets than those offered by TPE/ EMR. This again impacts negatively on local rail users. Progress is being made at Dore station and on the local passing loop near Bamford.

The Williams- Schapps Review should lead to more 'joined up ' planning on rail services. HVRUG continues to press for improvement of our local services.

K Allinson

---

## Hope Valley Upgrade Closure Notification

The Hope Valley rail upgrade will remove several bottlenecks between Manchester and Sheffield.

Blockades:

- 28<sup>th</sup>-29<sup>th</sup> May – 29hr closure
- 2<sup>nd</sup>- 4<sup>th</sup> July – 54hr closure
- 9<sup>th</sup>-11<sup>th</sup> July – 54hr closure
- 16<sup>th</sup>-18<sup>th</sup> July – 54hr closure
- 23<sup>rd</sup>-25<sup>th</sup> July – 54hr closure
- 30<sup>th</sup> July – 2<sup>nd</sup> August – 54hr closure

# Walk Moor Programme 2022

## on the Eastern Moors

**FREE  
walking  
groups**

Explore new moorland areas and meet new people. To reserve a place on a walk and ensure that you receive any updates, please contact Helen Milton on [helen.milton@derbyshiredales.gov.uk](mailto:helen.milton@derbyshiredales.gov.uk) Tel: 01629 761194. Alternatively, meet us at the start of the walk. In partnership with Derbyshire Dales District Council and North East Derbyshire District Council

Join us for our Walk Moor Programme on the Eastern Moors. You're welcome to come along whether you're interested in exploring new areas on the moors, getting more exercise or meeting new people. Your walk will be led by a qualified leader and you'll also meet other people who volunteer on the Eastern Moors. All walks are between 2.5 and 3.5 miles long and should take around ninety minutes.

**Walking on the Eastern Moors:** These walks are all in a moorland environment, so you can expect great views and wide open spaces. If you get into the habit of walking with us, you'll experience the Eastern Moors throughout the year including the ground nesting birds in the spring, purple heather in late summer and the deer rut in the autumn. You may see (or hear) some interesting wildlife and some of our walks will visit ancient sites. Please be aware that these moorland walks are likely to cross uneven and sometimes rocky ground and will include some uphill walking. The paths can be wet and muddy, particularly in spring and autumn, and we may encounter some of the animals who graze the moors. Access to paths is usually through gates - we'll tell you about any stiles in the description of each walk.

**What to bring:** The weather on the moors can be different to that in local towns so it's a good idea to go prepared: Wear a waterproof jacket and some warmer layers of clothes. Wearing long trousers can help to protect your legs from brambles and ticks. Waterproof shoes with a good grip and ankle support, such as hiking boots, are necessary to protect you on uneven ground. Wear hat and gloves in spring and

autumn, and a sunhat and sunscreen in summer. Carry some water. Bring walking poles (if you have them). Dogs are welcome on our walks, but please keep them on a lead of less than 2m at all times.

**Walk Moor Plus (WMP)** If you'd like the chance to explore more of the Eastern Moors, then join us for Walk Moor Plus. You'll have the opportunity to experience more of our wonderful moorland scenery with a selection of walks which will be longer, hillier and rockier than our usual Walk Moor outings. We'll be out over lunchtime so please bring a packed lunch, a drink and waterproofs.

### **Programme of Walks**

Thursday 5th May Walk across Baslow Edge to the Wellington Monument, Jack Flat and Big Moor, returning down stone steps to Curbar Gap Car Park. Miles: 3 miles. Parking: Park at Curbar Gap Car Park (Parking charges will apply. Free to National Trust and RSPB members so bring your membership card). Time: Please be ready to start walking at 10.30am.

Thursday 19th May - WMP Explore Gardom's Edge and Big Moor. Miles: 6.7 miles. There are a couple of stiles to cross on this route. Please bring a packed lunch. Parking: Park in the pay and display car park below Birchen Edge, next to the Robin Hood pub (Parking charges will apply. Free to National Trust and RSPB members so bring your membership card). Time: Please be ready to start walking at 10.30am, returning mid afternoon.

Thursday 9th June - Walk across Topley Moor on Moss Road and Air Shaft, returning through the Longshaw Estate. Miles: 3 miles. Parking: Park in the Woodcroft (Visitor Centre) Car Park at Longshaw (£3.50 for 4 hours. Free to National Trust members so bring your membership card). Time: Please be ready to start walking at 10.30am.

Thursday 7th July - Walk over Winyards Nick and Surprise View. Please note that this walk includes more uphill walking than our other routes. Miles: 2.6 miles. Parking: Park in Surprise View Car Park (£4.00 for 4 hours. Card payments only – no cash). Time: Please be ready to start walking at 10.30am.

For more information and walk dates please visit the websites or call:

Tel: 0114 2891543

<https://www.ne-derbyshire.gov.uk/community/walking>.

<https://www.visit-eastern-moors.org.uk/>

<http://www.derbyshiredales.gov.uk/healthwalks>

Group	Name	Phone	Email
Allotments	Michael Wren	630593	michaelc@thewrens.f9.co.uk
Bishop Pavilion (Bookings)	Elaine Hutchinson	630351	e.hutchinson3@btinternet.com
Book Worms	Eleanor Wood		eleanorwood82@yahoo.co.uk
Book Group Too	Clare Allerton		clare.allerton@btinternet.com
Bridge Club	Lionel Stout	630446	lionelstout@yahoo.co.uk
Community Shop	Peter Ragdale	631611	peter@grindlefordshop.co.uk
Cricket Club			grindlefordcc@gmail.com
FOGs Friends of Grindleford Station	Kay Allinson Colleen Gray	630118 639981	
Gaiters	Tim Reynolds	630023	
Gallop	Anna Allaway	07796 130474	annaallaway@gmail.com
Goat	Dave Kirkup		info@grindlefordgoat.com
Horticultural Society	David Jackson	07713630584	djlj23@yahoo.co.uk
Lunch Club	Joy Ben	630221.	
Neighbourhood Watch	Peter Hutchinson	630351	
Grindleford News	Colleen and Diane		grindlefordnews@gmail.com
Parish Council	Sarah Battarbee		grindleparish@gmail.com
Play Group	Sophie Grant Pauline Bowman	07842 095402	gepsupervisor@hotmail.com
Playing Fields	Steve Benn	630221	highmead201@btinternet.com
Primary School		630528	info@grindlefordprimaryschool.co.uk
Primary School PTA	Lyndsay		Website:grindlefordprimaryschool.co.uk /pta or email via the school address
Rainbows	Chloe Fogg	639250	grindlefordrainbows1@gmail.com
St Helen's Church	Paul Moore	01433 410036	vicarpaul1@gmail.com
Tree Planting Group	Paul Thorpe		paul.thorpe@hotmail.com
Village Website	Matt Heason	639378	matt@heason.net
Youth Club	Ian Barker	639330	youthclubgrindleford@gmail.com

## Useful Websites:

Grindleford Community Shop: [www.grindlefordvillageshop.co.uk](http://www.grindlefordvillageshop.co.uk)

Check out all the activities going on in our pre-school and primary school:

[www.grindlefordandeyamplaygroup.org.uk](http://www.grindlefordandeyamplaygroup.org.uk) and

[www.grindlefordprimaryschool.co.uk](http://www.grindlefordprimaryschool.co.uk)

Finally, don't forget the village has its own website where you can find out about what is going on locally and post details of your own events:

[www.grindleford.com](http://www.grindleford.com)

If you are new to the village 'welcome' and we have a dedicated section with

information: <http://www.grindleford.com/welcome-to-grindleford/>

## Any News?

If there's anything you feel should be covered in the next issue, please send an item to the editors at [grindlefordnews@gmail.com](mailto:grindlefordnews@gmail.com).

The *Grindleford News* is quarterly, appearing in January, April, July and October.

*Many thanks to all who have contributed to this issue.*

THE GRINDLEFORD NEWS is funded by Grindleford Parish Council. It is produced quarterly and is distributed free to all households in the village. A few further copies are also available from the editors and is also available to view on the Village webpages.